

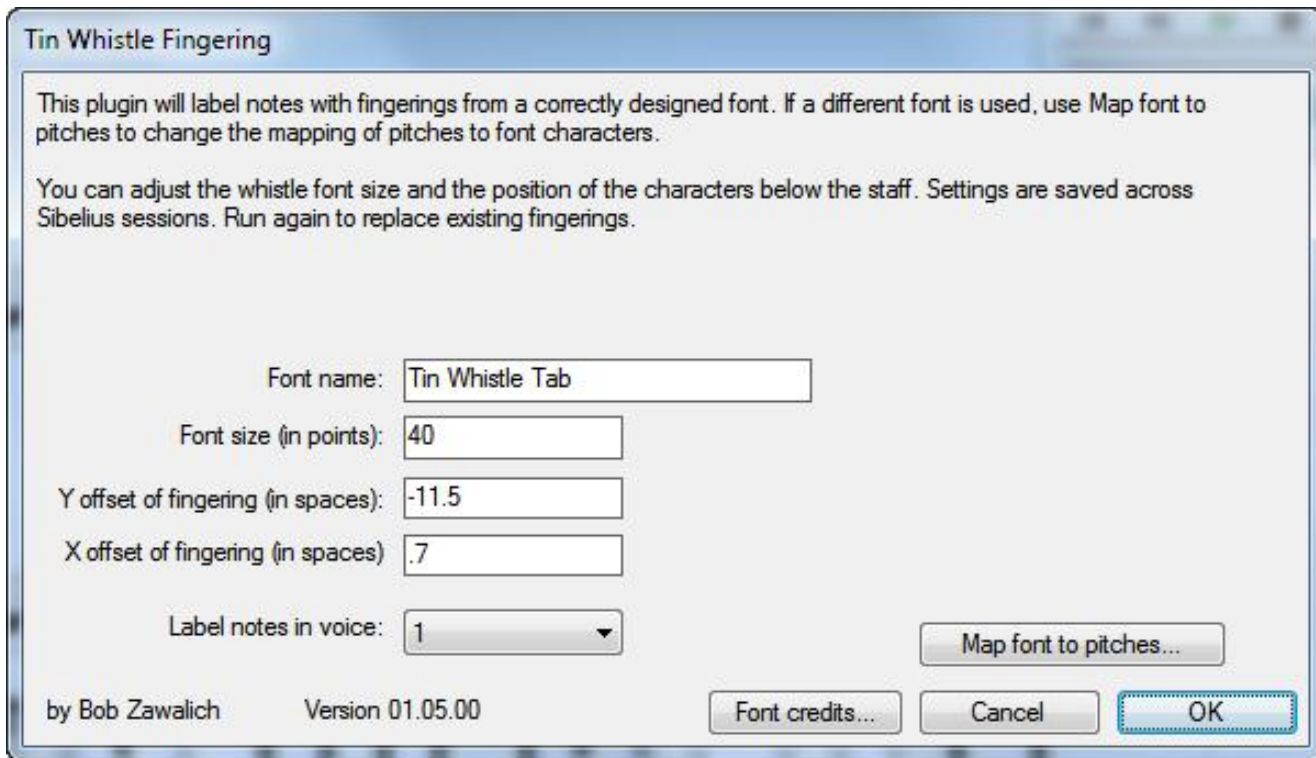
Using the Tin Whistle Fingering Plugin

Bob Zawalich October 15, 2010

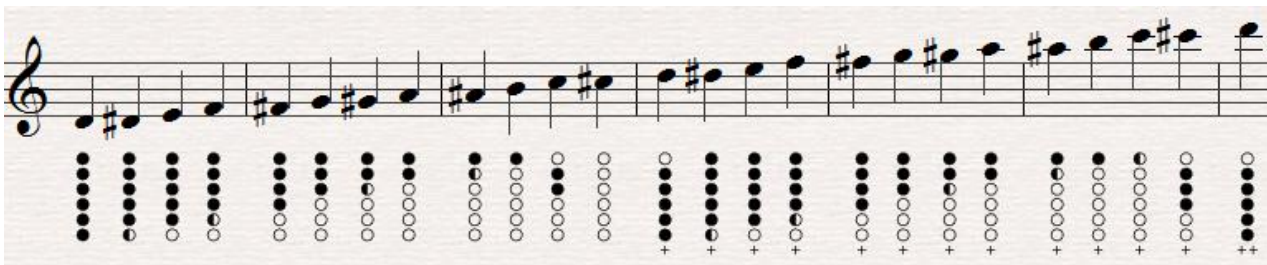
The Tin Whistle Fingering plugin adds fingering diagrams under each selected note.

Before you run the plugin you must install the plugin and the font TinWhistleTab.ttf, which is included in the zip file where you found this document. Install the font using the appropriate mechanisms for your operating system, and be sure to restart Sibelius after the font is installed.

The main plugin dialog looks like this:



The output can look like this:



To use the plugin with the default settings, simply select some notes, run the plugin and choose OK. The fingering characters will be added beneath the selected notes that are in the correct voice.

In Sibelius 6 or later, the staves will be adjusted to make room for the fingering characters; in Sibelius 5, you may need to move the staves apart manually.

The fingering diagrams are characters in a special font. One such font, *Tin Whistle Tab*, is supplied with the plugin, and can be installed on Windows or OSX, and may be freely distributed. The font was made available by Blayne Chastain, and the "*Font credits*" button in the plugin main dialog gives Blayne's contact information and copyright details. Further details can be found at <http://blaynechastain.com/tin-whistle-tab-font>.

Other fonts may be used as well. If you choose a different font, you will probably need to install it and remap the font characters to specific pitches using the *Map Font To Pitches* button.

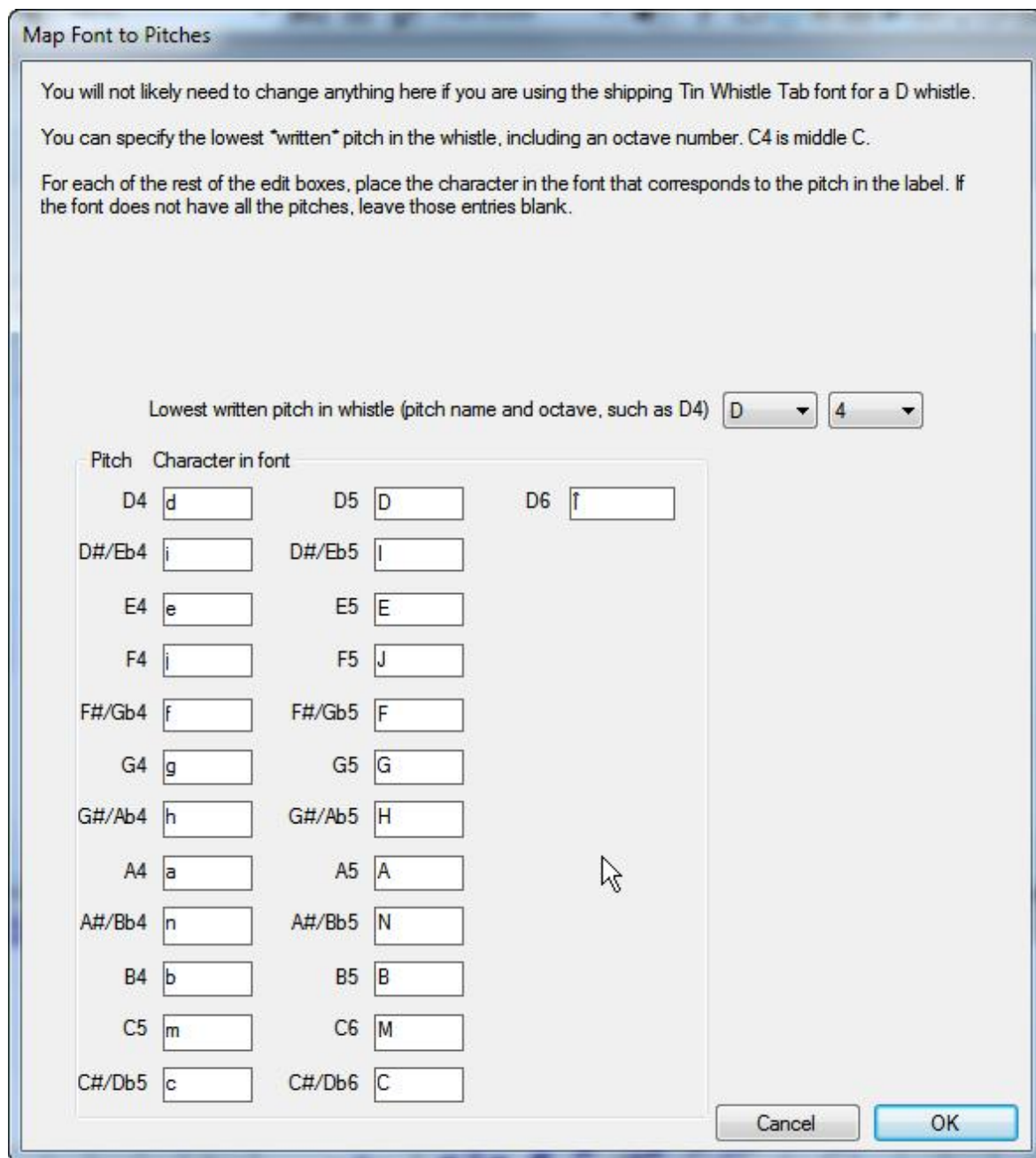
If you enter a font name and run the plugin, and instead of seeing the expected fingering symbols you see letters, then you have either mis-typed the font name (names are case-sensitive, and do not include extensions, such as .ttf), or the font you want is not installed. So please be sure the font is correctly installed and that Sibelius has been restarted since the font was installed, and that the name you have typed matches the name that identifies the font. As a test, if you have a piece of text in a score and select it, you can drop down the list of fonts in the Text pane of the Properties Window, and the font you want should be in the list, and the name you want to enter will be the name as it appears in the list.

Positioning options

You can change the font size of the fingering characters to make the bigger or smaller. You can also shift the characters horizontally or vertically. This is something you would likely need to do if you used a different font. Any changed made to the options settings are saved between sessions of Sibelius.

Mapping the font to pitches

If you change the font, or want to use different fingerings (if available in the font), or want to change to a different whistle (the plugin uses a D whistle by default), you can click on the *Map font to pitches* button, which brings up this dialog:



The dialog box is titled "Map Font to Pitches". It contains the following text:

You will not likely need to change anything here if you are using the shipping Tin Whistle Tab font for a D whistle.

You can specify the lowest *written* pitch in the whistle, including an octave number. C4 is middle C.

For each of the rest of the edit boxes, place the character in the font that corresponds to the pitch in the label. If the font does not have all the pitches, leave those entries blank.

Lowest written pitch in whistle (pitch name and octave, such as D4) D 4

Pitch	Character in font
D4	d
D5	D
D6	f
D#/Eb4	i
D#/Eb5	l
E4	e
E5	E
F4	j
F5	J
F#/Gb4	f
F#/Gb5	F
G4	g
G5	G
G#/Ab4	h
G#/Ab5	H
A4	a
A5	A
A#/Bb4	n
A#/Bb5	N
B4	b
B5	B
C5	m
C6	M
C#/Db5	c
C#/Db6	C

Buttons: Cancel, OK

Note that the plugin looks at written, rather than sounding pitches. In Sibelius (and in the real world), a tin whistle is a transposing instrument, and what looks like middle C plays back an octave higher. Sometimes you might have a whistle instrument, sometimes you might have a flute or a non transposing instrument in the score that you want to use the plugin with. Since the plugin uses written pitches, anything that looks like the notes above should get the correct fingering.

To change to a different whistle, just change the lowest pitch to a valid value. To change to a C whistle, just change the D4 to C4, and choose OK. The pitch edit box labels will adjust when you change the lowest pitch.

If you change the font, or want to use different fingerings for a pitch, find the appropriate font character and type it in the appropriate edit box. Once you choose OK, the new low pitch and font mappings will be saved until you change them again.